

D

D

C

C

B

B

A

A

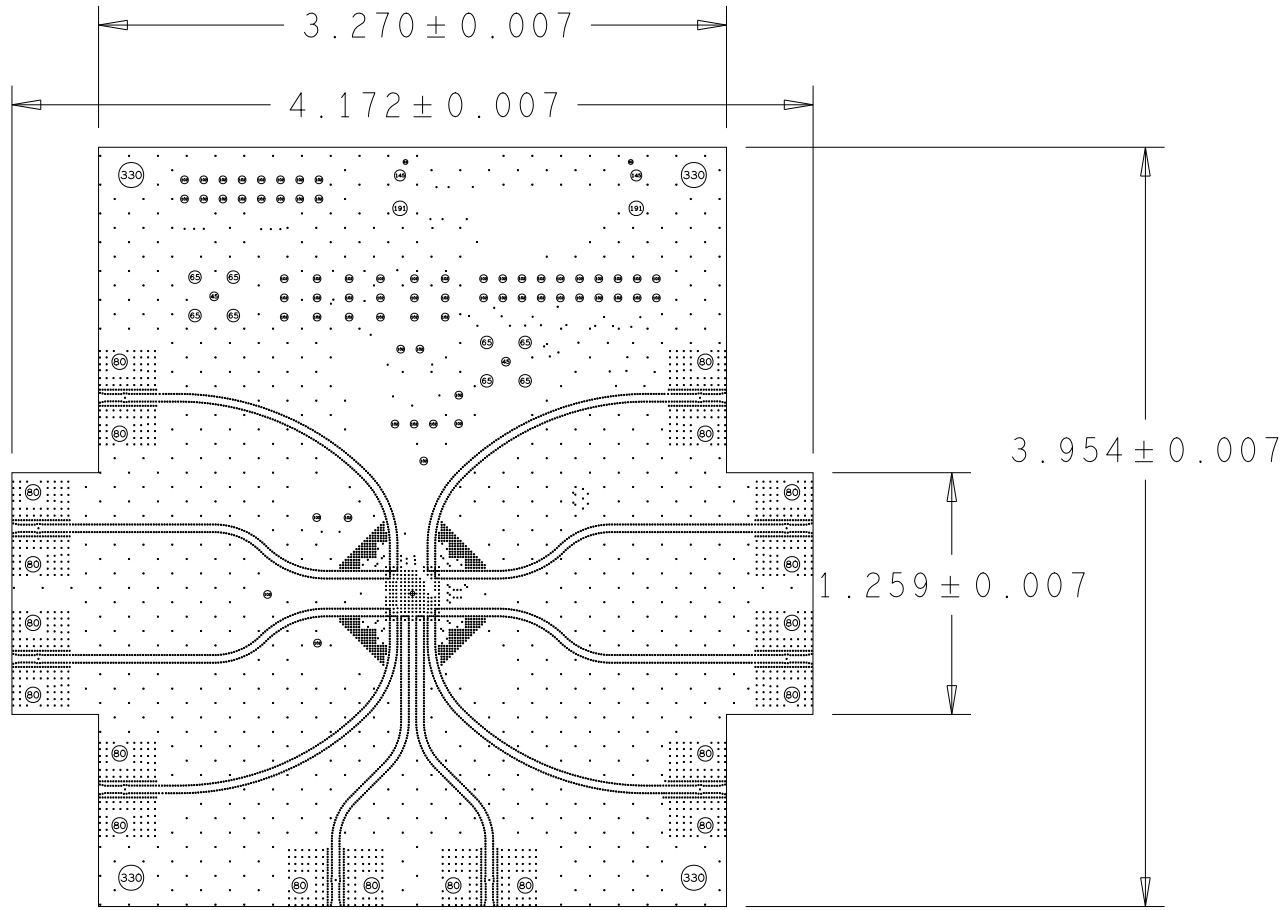
REVISIONS			
REV	DESCRIPTION	DATE	APPROVED

DRILL CHART: TOP to L2				
ALL UNITS ARE IN MILS				
FIGURE	FINISHED SIZE	TOLERANCE DRILL	PLATED	QTY
•	5.11	+2.36/-2.36	PLATED	11
•	6.0	+3.0/-3.0	PLATED	10

DRILL CHART: TOP to L3				
ALL UNITS ARE IN MILS				
FIGURE	FINISHED SIZE	TOLERANCE DRILL	PLATED	QTY
•	5.11	+2.36/-2.36	PLATED	214
•	6.0	+3.0/-3.0	PLATED	3546

DRILL CHART: TOP to BOTTOM				
ALL UNITS ARE IN MILS				
FIGURE	FINISHED SIZE	TOLERANCE DRILL	PLATED	QTY
•	5.11	+2.36/-2.36	PLATED	21
•	6.0	+3.0/-3.0	PLATED	1868
•	24.8	+3.0/-3.0	PLATED	2
•	40.16	+3.0/-3.0	PLATED	66
•	45.0	+3.0/-3.0	PLATED	2
⊙	65.0	+3.0/-3.0	PLATED	8
⊙	75.2	+3.0/-3.0	PLATED	2
⊙	129.92	+2.99/-2.99	PLATED	4
•	57.09	+3.0/-3.0	NON-PLATED	2
⊙	80.0	+2.0/-2.0	NON-PLATED	20

STACKUP TABLE				
Unit = Mils				
#	NAME	TYPE	MATERIAL	THICKNESS
1	TOP	SURFACE	AIR	0
		PLANE	0.5 COPPER	0.7
		DIELECTRIC	MEGTRON6 10 GHZ	9
2	L2	CONDUCTOR	10Z COPPER	1.4
		DIELECTRIC	MEGTRON6 10 GHZ	10
3	L3	PLANE	10Z COPPER	1.4
		DIELECTRIC	MEGTRON6 10 GHZ	41
4	BOTTOM	CONDUCTOR	0.5 COPPER	0.7
		SURFACE	AIR	0
TOTAL THICKNESS				64.2



NOTES: UNLESS OTHERWISE SPECIFIED:  
MANUFACTURING:

1. APPLICABLE SPECIFICATIONS AND ORDER OF PRECEDENCE:
  - THE PURCHASE ORDER
  - THIS DRAWING
  - IPC-6012 SERIES, CURRENT REVISION, CLASS 2.
  - IPC-A-600 CURRENT REVISION, CLASS 2.
  - IPC-7721 CURRENT REVISION, CLASS 2.
2. MATERIAL:MEGTRON 6 COPPER THICKNESS, DIELECTRIC ARRANGEMENT AND THICKNESS PER REFERENCE STACKUP AND REQUIREMENTS BELOW. FLAMMABILITY RATING 94VO REQUIRED.
3. PLATING: ADDITIONAL CU PLATE APPROX. 10Z./5OFT. PLATED THROUGH HOLES AS SHOWN IN CHART REQUIRE 0.001" MINIMUM BARREL PLATING THICKNESS. NOTE
4. SURFACE FINISH: ELECTROLESS NICKEL/IMMERSION GOLD PER IPC-4552. NICKEL THICKNESS 120-240 MICRO-INCHES. GOLD THICKNESS 3-6 MICRO-INCHES.
5. SOLDERMASK: LPI SOLDERMASK SMOBC BOTH SIDES PER IPC-SM-840 CURRENT REVISION, CLASS H AND ARTWORK SUPPLIED. ENSURE SOLDERMASK DOES NOT ENCROACH ON SMD LANDS. COLOR GREEN.
6. SILKSCREEN:APPLY NON-CONDUCTIVE/NON-NUTRIENT EPOXY INK PER ARTWORK SUPPLIED. ENSURE NO LEGEND IS APPLIED OVER SOLDERABLE SURFACES. MARK LOGO UL RATING AND DATE CODE ON SECONDARY SIDE.
7. ARTWORK: BOARD IS DESIGNED TO NOMINAL 5/5 TECHNOLOGY. VENDOR MAY ADD OR REMOVE NON-FUNCTIONAL CU AS NEEDED PER PROCESS AND/OR BOW/TWIST REQUIREMENTS.
8. NETLIST TEST: VENDOR TO PROVE TOOLED GERBER FILES AGAINST SUPPLIED NETLIST IN IPC-D-356 FORMAT. FINAL PRODUCT TO BE TESTED TRACEABLE TO SAME.
9. SOLDERABILITY: SOLDERABILITY TO BE CONFIRMED PER LOT IAW IPC-650.
10. SERIALIZE BOARDS AS FOLLOWS: "S/N YYYYMM##" YEAR, MONTH-NUMBER.
11. GROUND SHAPES EXTENDED TO BOARD EDGE ARE INTENTIONAL.
12. RoHS COMPLAINT.
13. FILL 5.11 MIL AND 6 MIL HOLES WITH NON-CONDUCTIVE MATERIAL AND CU PLATE. FLAT PADS WITH NO DIMPLES REQUIRED. OUTGASSING NOT PERMITTED.
14. FILL DRILL FIGURE "6P" WITH SOLDERMASK, THESE ARE 1:3 VIA'S THAT ARE 6 MILS.

ASSEMBLY:

1. CAUTION: ELECTRO STATIC DEVICES: THIS ASSEMBLY CONTAINS PARTS SENSITIVE TO DAMAGE BY ELECTROSTAATIC DISCHARGE (ESD) USE PRECAUTIONARY PROCEDURES IN ACCORDANCE TO MIL-STD-1686/IPC-610 CLASS II AND III IN HANDLING, STORAGE AND SHIPPING OF THIS ASSEMBLY.
2. THE FOLLOWING ARE FOR REFERENCE ONLY AND MAY NOT APPEAR ON THE PARTS.
  - A PLUS SIGN (+) INDICATES THE POSITIVE END OF A POLARIZED CAPACITOR. A SQUARE PIN OR CIRCLE WILL INDICATE THE PIN ONE OF A DEVICE OR CONNECTOR. IN ADDITION TO THIS A CHAMFERED CONRNER OR AN INDENTED OUTLINE WILL ALSO INDICATE PIN ONE OF A DEVICE OR CONNECTOR.
3. FOR COMONETS NOT TO BE INSTALLED REFER TO SCHEMATIC AND BILL OF MATERIALS. THESE COMONETS WILL BE DISGNATED AS "DNI".
4. ASSEMBLE AND SOLDER IN ACCORDANCE TO IPC-610 CLASS II (CURRENT REVISION).
5. SOLER TYPE: LEAD FREE.
6. WHEN MOUNTING SMA CONNECTORS ENSURE THAT CONNECTOR PIN IS CENTERED AND FLUSH WITH TRACE. CONNECTOR BODY TO BE FLUSH AGAINST BOARD EDGE. NO AIR GAP'S PERMITTED.

UNLESS OTHERWISE SPECIFIED		SIGNATURES	DATE	<div>RENESAS</div> 11988 El Camino Real San Diego, California 92130		
DIMENSIONS ARE IN INCHES TOLERANCES UNLESS SPECIFIED: 2 PL DECIMALS + 3 PL DECIMALS + ANGLES + FRACTIONS +		DRAWN Sherrie	02/20			
		CHECKED		HWE-F6212B165-A		
		ENGRG Loi	02/20			
		ISSUED		RF		
				SIZE D	FSCM NO	DWG NO XXXXXX
				SCALE		SHEET